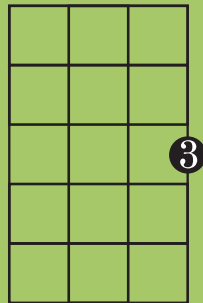


# Gang rüef de Bruune

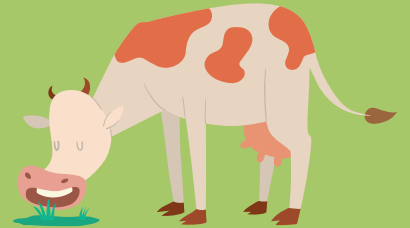
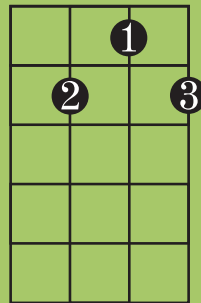
Trad. Appenzell



C



G7



**C**

Gang rüef de Bruune, gang rüef de Gäle, si sölid allsam, si sölid allsam

**G7**

**C**

**C**

**G7**

**C**

Gang rüef de Bruune, gang rüef de Gäle, si sölid allsam in Stall iecho

**C**

**G7**

Ref. Senneledujaho o sennele duja ho, sennele dujaho o

**C**

Senneledujaho o senneledujaho x 2



Gang rüef de Wiisse, gang rüef de Schwarze.....

Ref.

Gang rüef de Grosse, gang rüef de Chliine....

Ref.

Gang rüef de Gscheckete, gang rüef de Gfläckete

Ref.

